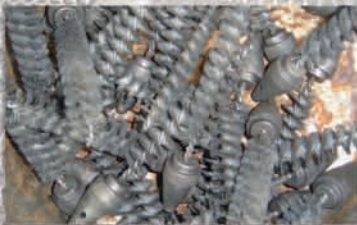
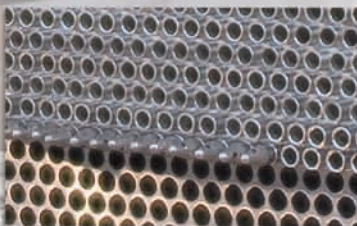


# 3

## TubeIN Tube guide for tube sheet assembly



After preparing the exchanger cage using the manufactured tube sheets and baffles, fastened to each other by means of tie-rods, you can proceed with the actual assembly stage.

Maus Italia offers a **comprehensive range of tube guides**, aimed at helping and expediting this operation, significantly increasing productivity.

Maus Italia's **technical staff** are at your disposal to recommend the optimum solution for each situation.



Photograph  
By the kind  
permission of  Villa & Bonaldi  
Rovigo - Italy

# F/780

Tube guide for tube insertion during the assembly of the single and double tube sheet heat exchangers.

**F/780**, tube guide for tube sheet assembly.

It consists of an aluminium **conical head** (steel, PVC or other materials available upon request) and an **interchangeable nylon brush**.

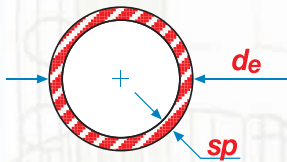
It aids the **quick and smooth insertion** of tubes through the tube sheet and baffle holes.

A transverse hole on the conical head **allows the easy withdrawal** of the tube guide, once insertion is completed.

The **F/780** model is offered by Maus Italia in **multiple sizes**, to cover the range of the most common tubes, both in **inches** and in **mm**:

- for tubes **classified in inches** - **3/8** to **1.1/2"** (9.52 to 38.10 mm)
- for tubes **classified in mm** - **10** to **38 mm** (**0.394"** to **1.496"**)

Maus Italia's technical staff are at your disposal for tailor made options (in terms of size and materials) in accordance with customer requests.



## F/780

Tube in inches		F/780	
de	sp		
inches	mm	B.W.G.	Code
3/8"	9,52	18÷20	F/780-0
1/2"	12,70	16÷18	F/780-1
		19÷20	F/780-2
5/8"	15,87	12÷13	F/780-3
		14÷16	F/780-4
		17÷20	F/780-5
3/4"	19,05	10÷12	F/780-6
		13÷16	F/780-7
		17÷20	F/780-8
7/8"	22,22	10÷12	F/780-9
		13÷16	F/780-10
		17÷20	F/780-11
1"	25,40	13÷12	F/780-12
		13÷16	F/780-13
1.1/4"	31,75	17÷20	F/780-14
		10÷12	F/780-15
1.1/2"	38,10	13÷16	F/780-16
		10÷12	F/780-17
		13÷16	F/780-18

## F/780

Tube in mm		F/780	
de	sp		
mm	inches	mm	Code
10	0.394"	0,5÷1,0	F/780-50
12	0.472"	0,5÷1,0	F/780-51
		1,5÷2,0	F/780-52
14	0.551"	0,5÷1,0	F/780-53
		1,5÷2,0	F/780-54
16	0.630"	1,0÷1,5	F/780-55
		2,0	F/780-56
18	0.709"	1,0÷1,5	F/780-57
		2,0	F/780-58
20	0.787"	1,0÷1,5	F/780-59
		2,0÷2,5	F/780-60
22	0.866"	1,0÷1,5	F/780-61
		2,0÷2,5	F/780-62
25	0.984"	1,0÷1,5	F/780-63
		2,0÷2,5	F/780-64
32	1.260"	1,5÷2,0	F/780-65
		2,5÷3,0	F/780-66
38	1.496"	1,5÷2,0	F/780-67
		2,5÷3,0	F/780-68

