

# Using Proper Accessories

The BDS PowerWORKER and the StarterKIT.

## Accessories for magnetic core drill machines from BDS makes work easier

The functional, universally applicable BDS PowerWORKER tool, which is offered in the BDS Starter-KIT together with one litre of high-performance cutting oil and the KBK core drill box with 5 core drills, is indispensable in the workshop and is offered as a money-saving package.

### PowerWORKER

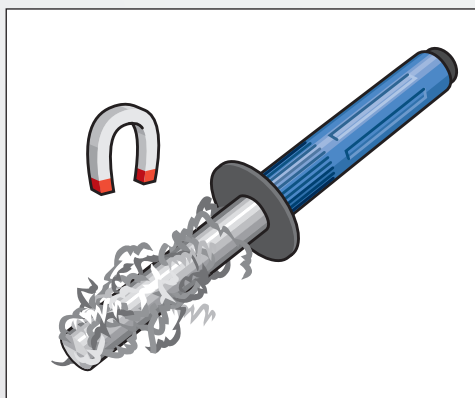
The BDS PowerWORKER cleans up with all magnetic drilling chips.

With the help of this practical tool and its powerful magnetic force, chips are collected with ease and then placed quickly and easily in the scrap container. Magnetise, collect together, strip off and finished.

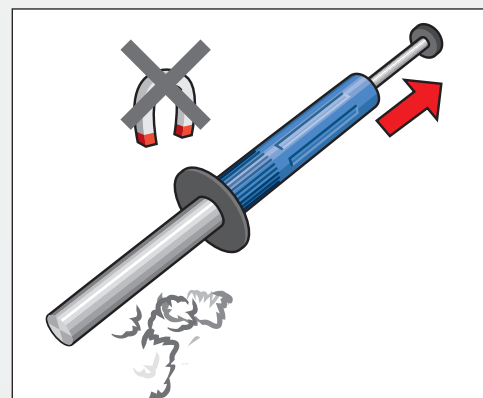
**POWERWORKER**

**ORDER NO.**

POW 100



Iron chips are collected together easily with the powerful permanent magnet of the PowerWORKER.



The chips can then be disposed of in a contact-less manner by demagnetisation.



## The StarterKIT, professional choice for your drilling application

Begin with the proper base equipment for each magnetic core drilling machine. As a consolidated package at a particularly attractive price.

- Five short core drills of the most common diameters: 14, 18 and 22 mm
- 1 litre of High-performance cutting oil BDS 5000
- and the BDS PowerWORKER

### BDS StarterKIT

#### ORDER NO.

ZST 100

#### Contents:

- 1 Standard core drill box with
- 2 KBK –  $\varnothing$  14 mm
- 2 KBK –  $\varnothing$  18 mm
- 1 KBK –  $\varnothing$  22 mm
- 1 High-performance cutting oil BDS 5000
- 1 BDS PowerWORKER

### COMBI TOOL SET

#### ORDER NO. STANDARD/SIZE

ZGK 001

#### BDS Combi Tool Set, 8 pcs.

Neat, solid steel box equipped with twist drills, taps and countersinks for making threaded holes from M8 to M16

- |                    |                                  |
|--------------------|----------------------------------|
| 1 Twist drill      | DIN 338, $\varnothing$ 6.8 mm    |
| 1 Twist drill      | DIN 338, $\varnothing$ 8.5 mm    |
| 1 Twist drill      | DIN 338, $\varnothing$ 10.2 mm   |
| 1 Machine tap each |                                  |
|                    | DIN 371, M8                      |
|                    | DIN 376, M10, M12, M16           |
| 1 Countersink      | DIN 335                          |
|                    | Form C 90° $\varnothing$ 20.5 mm |





## Quick-change drill chuck and inserts for threads from M 6 to M 42

Magnetic core drilling machines of the ProfiPLUS class are ideally suited for thread cutting.

Basic requirements are: CW/CCW operation, full wave control electronics and high motor performance.

## Quick-change drill chuck size MK 2, MK 3 and MK 4

The large stroke range of the BDS magnetic core drilling machines, in conjunction with the quick-change chuck, facilitates fast and efficient working without having to repeat the aligning and centring when changing the tool. The

quick-change drill chuck can be universally used for the quick-change inserts with and without safety friction clutch.







# Thread cutting systems

For magnetic core drilling machines of the ProfiPLUS class.

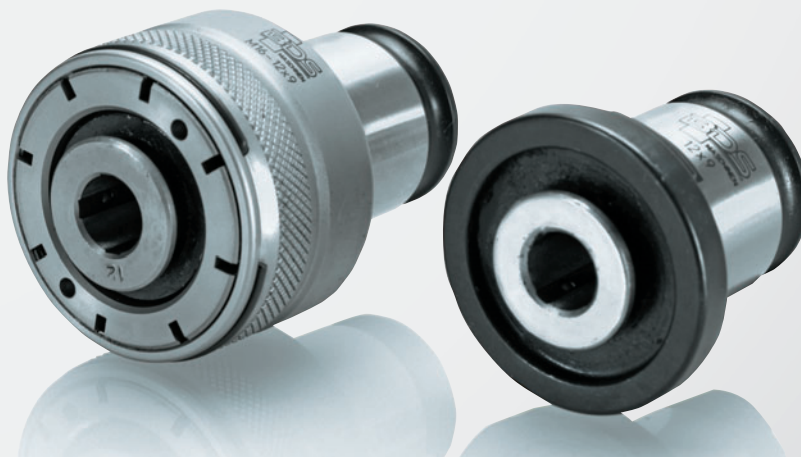


Drilling, countersinking and thread cutting with a magnetic core drilling machine from BDS. Quickly, easily and with high precision.

## Option 1: Quick-change inserts with safety friction clutch

Threads from M 6 to M 42 – BDS inserts with safety friction clutch allow for precise threading of through-hole threads and blind-hole threads.

The safety friction clutch prevents tap fracture by contacting the bottom of the borehole.



## Option 2: Standard quick-change inserts

Threads from M 6 to M 30 – BDS inserts are suited for taking up of taps for through-hole threads.

# Which Machine? Which thread?

Assignment of machines of the ProfiPLUS class and the possible thread diameter to the size of the basic quick-change drill chucks and inserts.

## THREAD CUTTING SYSTEMS

### GSW Quick-change drill chucks:

In the versions MK 2, MK 3, MK 4. For taking up quick-change inserts GSE or GSS.

GSW 222 Size 2 MK 2

GSW 331 Size 1 MK 3

GSW 332 Size 2 MK 3

GSW 333 Size 3 MK 3

GSW 442 Size 2 MK 4

GSW 443 Size 3 MK 4

GSW 444 Size 4 MK 4



GSE  
Standard quick-change insert  
Size 1, 2, 3



GSS  
GSS Quick-change insert  
with safety friction clutch  
Size 2, 3, 4

## OVERVIEW

### ORDER NO.

GSW 222 Quick-change drill chuck

GSW 331 Quick-change drill chuck

GSW 332 Quick-change drill chuck

GSW 333 Quick-change drill chuck

GSW 442 Quick-change drill chuck

GSW 443 Quick-change drill chuck

GSW 444 Quick-change drill chuck

GSE 103 – GSE 114 each

GSE 205 – GSE 222 each

GSE 314 – GSE 330 each

GSS 205 – GSS 222 each

GSS 312 – GSS 330 each

GSS 420 – GSS 442 each

GSE 100 Set of quick-change inserts size 1, M3 – M14

GSE 200 Set of quick-change inserts size 2, M5 – M24

GSE 300 Set of quick-change inserts size 3, M14 – M30

## Tap adapters – getting started economically

By means of the adapter, the taps are taken up directly into the 19 mm or 32 mm Weldon system. Suitable for through-hole threads only!



### TAP ADAPTER WITH WELDON SHANK

| ORDER NO. | THREAD      | SHANK Ø | SQUARE |
|-----------|-------------|---------|--------|
| ZGA 010   | M10 DIN 376 | 7       | 5.5    |
| ZGA 012   | M12 DIN 376 | 9       | 7      |
| ZGA 014   | M14 DIN 376 | 11      | 9      |
| ZGA 016   | M16 DIN 376 | 12      | 9      |
| ZGA 018   | M18 DIN 376 | 14      | 11     |
| ZGA 020   | M20 DIN 376 | 16      | 12     |
| ZGA 022   | M22 DIN 376 | 18      | 14.5   |
| ZGA 024   | M24 DIN 376 | 18      | 14.5   |
| ZGA 027   | M27 DIN 376 | 20      | 16     |
| ZGA 030   | M30 DIN 376 | 22      | 18     |

up to ZGA 020 with 19 mm Weldon shank ( $\frac{3}{4}$ ")

from ZGA 022 with 32 mm Weldon shank ( $1\frac{1}{4}$ ")

# THREAD CUTTING SYSTEMS



Quick-change drill chucks GSW

Quick-change inserts  
Standard GSE

Quick-change inserts  
with safety friction  
clutch GSS

| MAB 1300 | MAB 825 | MAB 525 | MAB 485 | Order No.                 | Quick-change drill chuck | Thread  | Order No. | ø x square | Order No. | ø x square |
|----------|---------|---------|---------|---------------------------|--------------------------|---------|-----------|------------|-----------|------------|
|          | MAB 845 |         |         |                           |                          |         |           |            |           |            |
|          |         |         |         | GSW 222                   | Size 2 MK 2              | M5/M6   | GSE 205   | 6 / 4.9    | GSS 205   | 6 / 4.9    |
|          |         |         |         |                           |                          | M8/M10  | GSE 208   | 8 / 6.2    | GSS 208   | 8 / 6.2    |
|          |         |         |         |                           |                          | M10     | GSE 210   | 10 / 8.0   | GSS 210   | 7 / 5.5    |
|          |         |         |         |                           |                          | M12     | GSE 212   | 9 / 7.0    | GSS 212   | 9 / 7.0    |
|          |         |         |         |                           |                          | M14     | GSE 214   | 11 / 9.0   | GSS 214   | 11 / 9.0   |
|          |         |         |         |                           |                          | M16     | GSE 216   | 12 / 9.0   | GSS 216   | 12 / 9.0   |
|          |         |         |         | GSW 331                   | Size 1 MK 3              | M3      | GSE 103   | 3.5 / 2.7  |           |            |
|          |         |         |         |                           |                          | M4      | GSE 104   | 4.5 / 3.4  |           |            |
|          |         |         |         |                           |                          | M5/M6   | GSE 105   | 6 / 4.9    |           |            |
|          |         |         |         |                           |                          | M8      | GSE 108   | 8 / 6.2    |           |            |
|          |         |         |         |                           |                          | M10     | GSE 110   | 10 / 8.0   |           |            |
|          |         |         |         |                           |                          | M12     | GSE 112   | 9 / 7.0    |           |            |
|          |         |         |         |                           |                          | M14     | GSE 114   | 11 / 9.0   |           |            |
|          |         |         |         | GSW 332                   | Size 2 MK 3              | M5/M6   | GSE 205   | 6 / 4.9    | GSS 205   | 6 / 4.9    |
|          |         |         |         |                           |                          | M8      | GSE 208   | 8 / 6.2    | GSS 208   | 8 / 6.2    |
|          |         |         |         |                           |                          | M10     | GSE 210   | 10 / 8     | GSS 210   | 7 / 5.5    |
|          |         |         |         |                           |                          | M12     | GSE 212   | 9 / 7.0    | GSS 212   | 9 / 7.0    |
|          |         |         |         |                           |                          | M14     | GSE 214   | 11 / 9     | GSS 214   | 11 / 9     |
|          |         |         |         |                           |                          | M16     | GSE 216   | 12 / 9     | GSS 216   | 12 / 9     |
|          |         |         |         |                           |                          | M18     | GSE 218   | 14 / 11    | GSS 218   | 14 / 11    |
|          |         |         |         |                           |                          | M20     | GSE 220   | 16 / 12    | GSS 220   | 16 / 12    |
|          |         |         |         | *not suitable for MAB 525 | M22/M24*                 | GSE 222 | 18 / 14.5 | GSS 222    | 18 / 14.5 |            |
|          |         |         |         | GSW 333                   | Size 3 MK 3              | M12     |           |            | GSS 312   | 9 / 7.0    |
|          |         |         |         |                           |                          | M14     | GSE 314   | 11 / 9     | GSS 314   | 11 / 9     |
|          |         |         |         |                           |                          | M16     | GSE 316   | 12 / 9     | GSS 316   | 12 / 9     |
|          |         |         |         |                           |                          | M18     | GSE 318   | 14 / 11    | GSS 318   | 14 / 11    |
|          |         |         |         |                           |                          | M20     | GSE 320   | 16 / 12    | GSS 320   | 16 / 12    |
|          |         |         |         |                           |                          | M22/M24 | GSE 322   | 18 / 14.5  | GSS 322   | 18 / 14.5  |
|          |         |         |         |                           |                          | M27     | GSE 327   | 20 / 16    | GSS 327   | 20 / 16    |
|          |         |         |         |                           |                          | M30     | GSE 330   | 22 / 18    | GSS 330   | 22 / 18    |
|          |         |         |         | GSW 442                   | Size 2 MK 4              | M5/M6   | GSE 205   | 6 / 4.9    | GSS 205   | 6 / 4.9    |
|          |         |         |         |                           |                          | M8      | GSE 208   | 8 / 6.2    | GSS 208   | 8 / 6.2    |
|          |         |         |         |                           |                          | M10     | GSE 210   | 10 / 8.0   | GSS 210   | 7 / 5.5    |
|          |         |         |         |                           |                          | M12     | GSE 212   | 9 / 7.0    | GSS 212   | 9 / 7.0    |
|          |         |         |         |                           |                          | M14     | GSE 214   | 11 / 9     | GSS 214   | 11 / 9     |
|          |         |         |         |                           |                          | M16     | GSE 216   | 12 / 9     | GSS 216   | 12 / 9     |
|          |         |         |         |                           |                          | M18     | GSE 218   | 14 / 11    | GSS 218   | 14 / 11    |
|          |         |         |         |                           |                          | M20     | GSE 220   | 16 / 12    | GSS 220   | 16 / 12    |
|          |         |         |         |                           |                          | M22/24  | GSE 222   | 18 / 14.5  | GSS 222   | 18 / 14.5  |
|          |         |         |         | GSW 433                   | Size 3 MK 4              | M12     |           |            | GSS 312   | 9 / 7.0    |
|          |         |         |         |                           |                          | M14     | GSE 314   | 11 / 9     | GSS 314   | 11 / 9     |
|          |         |         |         |                           |                          | M16     | GSE 316   | 12 / 9     | GSS 316   | 12 / 9     |
|          |         |         |         |                           |                          | M18     | GSE 318   | 14 / 11    | GSS 318   | 14 / 11    |
|          |         |         |         |                           |                          | M20     | GSE 320   | 16 / 12    | GSS 320   | 16 / 12    |
|          |         |         |         |                           |                          | M22/24  | GSE 322   | 18 / 14.5  | GSS 322   | 18 / 14.5  |
|          |         |         |         |                           |                          | M27     | GSE 327   | 20 / 16    | GSS 327   | 20 / 16    |
|          |         |         |         |                           |                          | M30     | GSE 330   | 22 / 18    | GSS 330   | 22 / 18    |
|          |         |         |         | GSW 444                   | Size 4 MK 4              | M20     |           |            | GSS 420   | 16 / 12    |
|          |         |         |         |                           |                          | M22/24  |           |            | GSS 422   | 18 / 14.5  |
|          |         |         |         |                           |                          | M27     |           |            | GSS 427   | 20 / 16    |
|          |         |         |         |                           |                          | M30     |           |            | GSS 430   | 22 / 18    |
|          |         |         |         |                           |                          | M33     |           |            | GSS 433   | 25 / 20    |
|          |         |         |         |                           |                          | M36     |           |            | GSS 436   | 28 / 22    |
|          |         |         |         |                           |                          | M39/42  |           |            | GSS 442   | 32 / 24    |



# Carry cases and adapters

Carry cases for magnetic core drilling machines and EKF edge processing machines. Adapters for drill chuck and gear rim drill chuck.

## Carry cases for magnetic core drilling machines

The new carry cases developed by BDS for magnetic core drilling machines have many benefits.

- ▶ Portable – low weight with high level of stability at the same time.
- ▶ Closed firmly – secure and large mechanical locks.
- ▶ Sealed – the contents are protected completely against dust and spray water.
- ▶ Roll along instead of carry – ABS wheels and telescopic grip.

BDS Maschinen develops products from the ergonomic points of view.

The new carry case provided with wheels for magnetic core drilling machines of the MAB 1300 series has large, robust ABS wheels and a telescopic grip, which facilitate transporting the heavy machine to a large extent and make it safe.

The MAB 1300 is fitted safely and securely in robust plastic bowls that absorb the heavy weight of the machine ideally.



### HARD PROTECTIVE CASE

#### ORD. NO. SUITABLE FOR

ZHK 100 MAB 100, MAB 150

ZHK 400 MAB 455, MAB 485, MAB 525

**Application:** Carry case for BDS magnetic core drilling machines. **Design:** Robust hard cover case with handle and stable clasps. With foam padding, no contents.

### CARRY CASE

#### ORD. NO. SUITABLE FOR

ZPK 001 EKF 300, EKF 450, EKF 452

**Application:** Carry case for EKF 300, EKF 450 and EKF 452.

**Design:** Plastic case with handle and foam padding, no contents.



### CARRY CASE ON WHEELS

#### ORD. NO. SUITABLE FOR

ZHK 1300 MAB 1300

**Application:** Carry case on wheels for BDS magnetic core drilling machines. **Design:** Robust carry case on wheels with handle and stable clasps. No contents.



### CARRY CASE ON WHEELS

#### ORD. NO. SUITABLE FOR

ZHK 825 MAB 825, MAB 845

**Application:** Carry case on wheels for BDS magnetic core drilling machines. **Design:** Robust carry case on wheels with handle and stable clasps. No contents.



The robust carry case on wheels.

BDS hard cover cases and carry cases on wheels are robust, watertight and shockproof.



1. Connect adapter to drill chuck.



2. Place drill chuck in direct arbor.



3. Ready for use with twist drill.

For magnetic core drilling machines with direct arbor  
19 mm Weldon ( $\frac{3}{4}$ " )

**ProfiSTART** MAB 100  
**ProfiBASIC** MABasic 200  
MABasic 400  
**ProfiSPEZIAL** AutoMAB 1500  
AkkuMAB 3000



#### ADAPTER FOR DRILL CHUCKS

##### ORDER NO.

ZAP 100  
Weldon shank 19 mm ( $\frac{3}{4}$ " ) to  $\frac{1}{2}$ " x 20 NF



#### GEAR RIM DRILL CHUCK

##### ORD. NO. INTERNAL THREAD CLAMP SIZE

ZBI 113  $\frac{1}{2}$ " x 20 NF 1 - 13 mm  
ZBI 116  $\frac{1}{2}$ " x 20 NF 2.5 - 16 mm



#### QUICK-ACTION DRILL CHUCK

##### ORD. NO. INTERNAL THREAD CLAMP SIZE

ZSI 113  $\frac{1}{2}$ " x 20 NF 1 - 13 mm  
ZSI 116  $\frac{1}{2}$ " x 20 NF 3 - 16 mm



1. Connect taper drift to drill chuck.



2. Place drill chuck in MT arbor.



3. Ready for use with twist drill.

For magnetic core drilling machines  
with Morse taper MK 2 or MK 3.

**ProfiPLUS** MAB 485 / 485 SB  
MAB 485  
MAB 525 / 525 SB  
MAB 825 / 845 SB  
MAB 1300  
**ProfiSTART** MAB 455 / 455 SB  
MAB 855  
**ProfiBASIC** MABasic 450  
**ProfiSPEZIAL** AirMAB 5000



#### TAPER DRIFT FOR DRILL CHUCK

##### ORDER NO.

ZKD 216 DIN 238 - MK 2/B16  
ZKD 316 DIN 238 - MK 3/B16



#### GEAR RIM DRILL CHUCK

##### ORD. NO. INTERNAL THREAD CLAMP SIZE

ZBK 113 DIN 238-B16 1 - 13 mm  
ZBK 116 DIN 238-B16 2.5 - 16 mm



#### QUICK-ACTION DRILL CHUCK

##### ORD. NO. INTERNAL THREAD CLAMP SIZE

ZSB 113 DIN 238-B16 1 - 13 mm  
ZSB 116 DIN 238-B16 3 - 16 mm



#### KEY FOR GEAR RIM DRILL CHUCK

##### ORDER NO.

ZEZ 113  
ZEZ 116



#### CHIP PROTECTION

##### ORD. NO. MACHINE

ZSS 050 MAB 100 - MAB 525  
ZSS 500 MAB 825 - MAB 855



#### DRILL DRIFT DIN 228

##### ORD. NO. SIZE DIN STANDARD

ZAS 002 MK 2 DIN 228  
ZAS 003 MK 3 DIN 228

#### SAFETY CHAIN

##### ORDER NO.

ZSK 001

#### PUMP BOTTLE

##### ORDER NO.

ZKP 100





# Tool holders and adapters

For BDS core drills with Weldon shanks - suitable for adaptation to external systems.

Tool holders for BDS core drills with Weldon arbor. Three systems are available; they allow for a friction-locked, comfortable and secure connection between the core drill and the magnetic core drilling machine.

Tool holder for BDS core drills with Weldon shanks 19 mm ( $\frac{3}{4}$ "")

Tool holder for BDS core drills with Weldon shanks 19 mm ( $\frac{3}{4}$ "") and 32 mm ( $1\frac{1}{4}$ "")

Tool holder for BDS core drills with 19 mm Weldon shanks ( $\frac{3}{4}$ "") and 32 mm ( $1\frac{1}{4}$ "")



## KEYLESS QUICK-CHANGE DRILL CHUCK SYSTEM

ORDER NO. SPINDLE HOLDER

ZSS 200 MK 2

ZSS 300 MK 3

With automatic internal lubrication for core drills with Weldon shank 19 mm ( $\frac{3}{4}$ "").

With hose and quick acting coupling. Quick tool change without any chuck key.

## INDUSTRIAL ARBOR WITH MANUAL INTERNAL LUBRICATION

ORDER NO. SPINDLE HOLDER

ZIA 219-M MK 2

ZIA 319-M MK 3

ZIA 419-M MK 4

For core drills with 19 mm Weldon shank ( $\frac{3}{4}$ "")

ZIA 332-M MK 3

ZIA 432-M MK 4

For core drills with 32 mm Weldon shank ( $1\frac{1}{4}$ "")

## INDUSTRIAL ARBOR WITH AUTOMATIC INTERNAL LUBRICATION

ORDER NO. SPINDLE HOLDER

ZIA 219-KN MK 2

ZIA 319-KN MK 3

ZIA 419-KN MK 4

For core drills with 19 mm Weldon shank ( $\frac{3}{4}$ "")

ZIA 332-KN MK 3

ZIA 432-KN MK 4

For core drills with 32 mm Weldon shank ( $1\frac{1}{4}$ "")

With hose and quick acting coupling.



## REDUCING BUSH DIN 2185

ORDER NO. OUTSIDE INSIDE

ZRH 210 MK 2 MK 1

## EXTENSION BUSH DIN 2178

ORDER NO. OUTSIDE INSIDE







ZVH 220 MK 2 MK 2

ZVH 230 MK 2 MK 3

ZVH 320 MK 3 MK 2

ZVH 330 MK 3 MK 3

**Adapters for BDS core drills.** With the appropriate adapter, BDS core drills with Weldon shanks are compatible with standard machines or tool holder systems on the market.

| Adapter with Weldon shank                                                          |                                                                                                       |                                                                                          |                                                                                    | Adapter for Nitto One-touch                                                                                                                    | Adapter for Fein QUICK-IN                                                                                                                 |
|------------------------------------------------------------------------------------|-------------------------------------------------------------------------------------------------------|------------------------------------------------------------------------------------------|------------------------------------------------------------------------------------|------------------------------------------------------------------------------------------------------------------------------------------------|-------------------------------------------------------------------------------------------------------------------------------------------|
| 32 mm (1 1/4")                                                                     | 19 mm (3/4")                                                                                          | 19 mm (3/4")                                                                             | 19 mm (3/4")                                                                       |                                                                                                                                                |                                                                                                                                           |
|  |                     |        |  |                                                            |                                                       |
| <b>ADAPTER</b><br><b>ORDER NO.</b>                                                 | <b>ADAPTER</b><br><b>ORDER NO.</b>                                                                    | <b>ADAPTER</b><br><b>ORDER NO.</b>                                                       | <b>EXTENSION</b><br><b>ORDER NO.</b>                                               | <b>ADAPTER</b><br><b>ORDER NO.</b>                                                                                                             | <b>ADAPTER</b><br><b>ORDER NO.</b>                                                                                                        |
| ZAP 200<br>from 32 mm<br>Weldon shank (1 1/4")<br>to 19 mm<br>Weldon shank (3/4")  | ZAF 002<br>For fine core drills<br>with internal thread<br>M18 x 6 P1.5 incl. 1<br>ejector pin ZAK125 | ZAF 003<br>For fine core drills<br>with QUICK-IN shank<br>incl. 1 ejector pin<br>ZAK 115 | ZAP 300<br>80 mm, 19 mm<br>Weldon shanks (3/4"),<br>ncl. 1 ejector pin<br>ZAK 080  | ZAF 005<br>With Nitto one-touch<br>holder for core drills<br>with Weldon shanks<br>19 mm (3/4") each<br>incl. 1 ejector pin<br>ZAK 107 and 125 | ZAF 004<br>With Quick-in holder<br>for core drills with Wel-<br>don shanks 19 mm<br>(3/4") each incl. 1<br>ejector pin ZAK 107<br>and 125 |



## Clamping devices for tubes from 80 mm to 500 mm diameter

The BDS clamping devices are suitable for tubes with a diameter from 80 to 250 mm and 150 to 500 mm. Flexible and quick clamping is possible in any drilling situation. The clamping device with swivelling V-blocks is fixed on the tube by means of tension chains. The drilling position on the tube can be adjusted easily and safely. The range of application of the magnetic core drilling machines of the ProfiPLUS series is significantly increased by these devices.



ZRO 250



ZRO 500

### TUBE CLAMPING DEVICE

#### ORDER NO.

ZRO 250

ZRO 500

**ZRO 250:** for MAB 455, 485, 525

For tube  $\varnothing$ : 80 – 250 mm

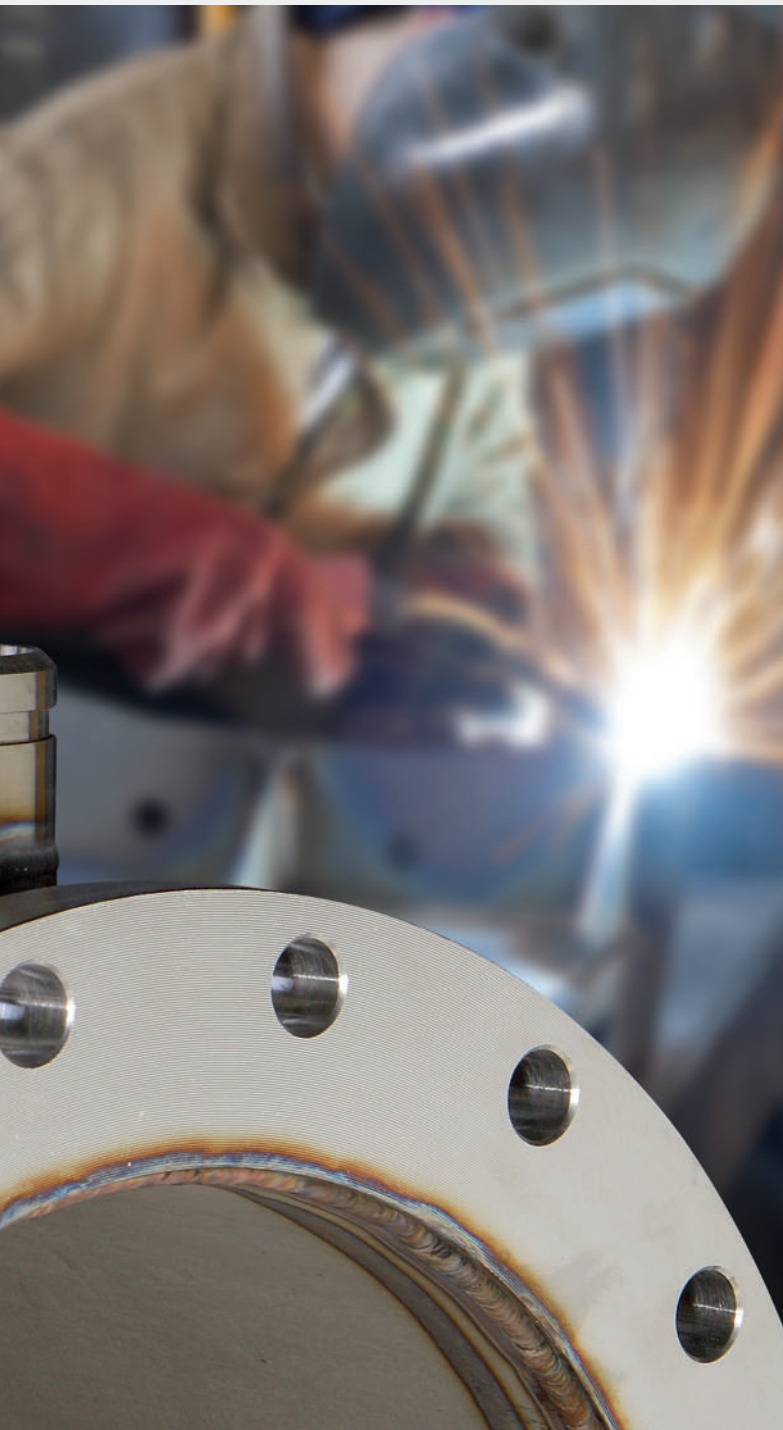
Chain length: 900 mm

**ZRO 500:** for MAB 825, 845, 855

For tube  $\varnothing$ : 150 – 500 mm

Chain length: 1.650 mm





# Clamping devices

For magnetic core drilling machines of the ProfiPLUS and ProfiSTART class. For tube processing and drilling of non-ferrous metals and stainless steel.

## Vacuum clamping device for non-ferrous metals

Magnetic core drilling machines from the ProfiPLUS class can in their entirety also be used for the processing of non-ferrous metals and stainless steel. For that purpose, BDS offers clamping devices, which are provided with a pump with circular oil lubrication to build up a vacuum to ensure a safe connection between the magnetic core drilling machine and the workpiece.

Furthermore, BDS offers customized devices, which exactly meet your requirements and instructions. Just contact us!



### VACUUM PLATE FOR SMOOTH SURFACES

#### ORDER NO.

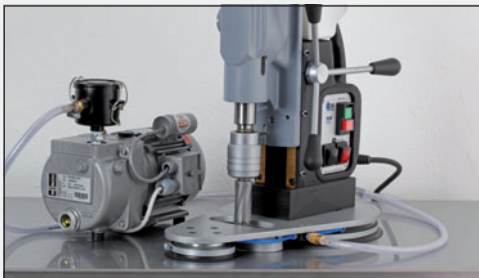
ZAV 400

**Application:** For smooth surfaces.

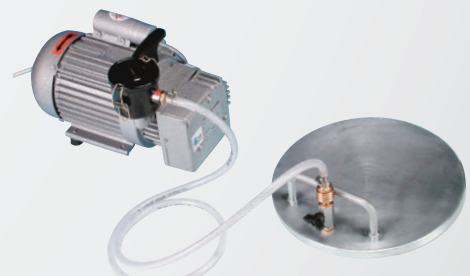
**Design:** High-performance vacuum pump with circular oil lubrication. Clamping plate with two suction areas and internal drilling area.

Size: 440 x 260 mm, long hole: 50 x 120 mm

ZAV 400  
Vacuum clamping device  
for smooth surfaces



ZAV 300  
Vacuum clamping device  
for channelled and  
gusset plates



### VACUUM PLATE FOR CHANNELLED AND GUSSET PLATES

#### ORDER NO.

ZAV 300

**Application:** Suitable for channelled and gusset plates.

**Design:** High-performance vacuum pump with circular oil lubrication. Clamping plate ø 300 mm.

# Pillars and clamping devices

Magnetic pillars for your own twist drilling machine, MobilCLAMP and drill stands.

**Build your own magnetic drilling machine!** BDS provides new options for the subject of clamping mechanisms for working with commercially available manual drilling machines and for magnetic core drilling machines.



Magnetic pillar



Industrial pillar



MobilCLAMP – mobile working with magnetic core drilling machines

## Magnetic pillars for hand drills

Using this practical magnetic drilling stand, you can convert your manual drilling machine into a magnetic drilling machine. The magnetic drilling stand is suitable for commercially available manual drilling machines with 43 mm collar diameter.

Thus, the powerful magnet facilitates working horizontally and doing overhead work safely. (For these applications, a safety chain must be used additionally.) The carriage has a working stroke of 180 mm.

## Industrial pillar for twist drilling machines

Industrial drilling stand for commercially available manual drilling machines with 43 mm collar diameter.

Safe, secure and stable by a cast base plate and carriage with a working stroke of 180 mm.

Optionally with a drilling machine vice, 100 mm jaw width. Screws for T-grooves are also available for securing.

## MobilCLAMP for BDS magnetic core drilling machines



Using the portable clamping mechanism, MobilCLAMP, you can supplement the application options of a magnetic core drilling machine onsite and in the workshop. The magnetic core drilling machine is placed on the desired surface for this purpose

and switched on. Components can be clamped securely in the quick-action clamping vice and you have a flexible table-top drilling machine in no time.

Optionally available: stable frame for MobilCLAMP clamping device.



#### MAGNETIC PILLARS

##### ORDER NO.

MBS 300

For commercially available hand drills with a collar diameter of 43 mm, stroke 180 mm.

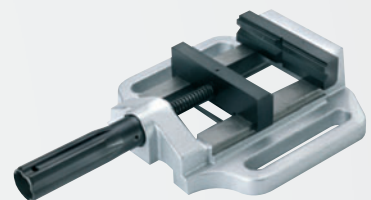


#### INDUSTRIAL PILLAR

##### ORDER NO.

ZBS 100

For commercially available hand drills with a collar diameter of 43 mm, stroke 180 mm. Vice and screws are not included in the delivery.



#### PRISM VICE

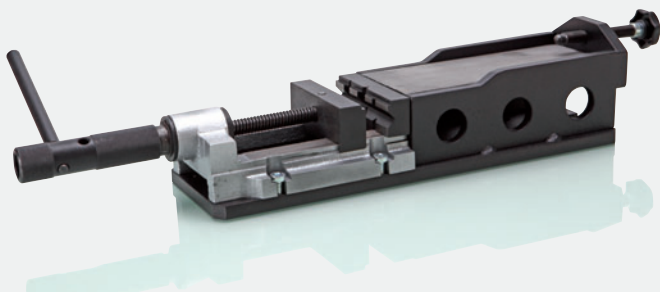
##### ORDER NO.

ZST 300 Prism vice

ZTN 100 Screw for T slots

ZSM 100 Hexagon nut

Jaw width: 100 mm, clamping range: 100 mm



#### CLAMPING DEVICE MobilCLAMP

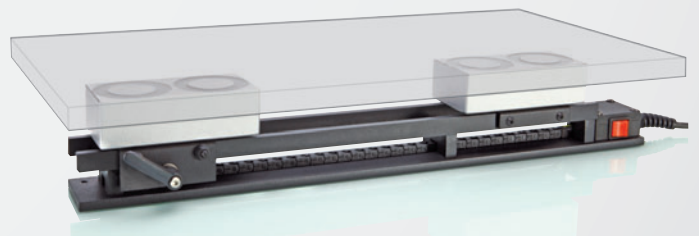
##### ORDER NO.

##### JAW WIDTH

ZMC 180 100 cm, 80 mm clamping width

ZMC 300 Base frame for clamping device

Mechanical clamping device for magnetic core drilling machines.



#### MAGNETIC CLAMPING DEVICE MagnetCLAMP

##### ORDER NO.

##### CLAMPING RANGE

ZMS 500/230V 100 – 800 mm

ZMS 500/120V 100 – 800 mm

Magnetic clamping device, the versatile mounting aid.





**The best working results – for the nature!** High-performance lubricants and cleaning spray are aligned perfectly to the respective application. These are environment-friendly products.

Particularly recommended in outdoor application: BDS high-performance cutting oil or high-performance cooling lubricant concentrate are bio-degradable without leaving any residues and toxicologically harmless.

However, at the same time, they are highly effective for the desired lubricating and cooling performance. In addition, the BDS 6000 concentrate can be mixed with water in the ratio 1:10 and is thus, high-yield.

## High-performance cutting oil **BDS 5000**



Pure vegetable oil that is not a hazardous good in the context of transport regulations. The base materials used are not listed in the catalogue of substances hazardous to water. BDS 5000 is not subject to labelling.

- Organic basic material with additives
- Water hazard class 1
- Bio-degradable, optimal base adjustment of the viscosity for the use of BDS core drills, and easy use for subsequent galvanising

## High-performance lubrication spray **BDS 5200**



Suitable for working under special conditions (overhead and horizontal) and also for high-alloy materials. Foam-like spray with very high adhesive force.

Advantages: Exact dosage of the grease spray and thus, optimal lubrication directly on the drill cutters. No drop formation and spraying around, and thus, maximum occupational safety on ladders and work platforms.

- White adhesive lubricant containing PTFE with corrosion protection
- Free from PCB, PCT, FCKW and chlorine
- Active ingredient: Lithium base grease on mineral basis with additives and solvent
- Propellant: Propane/Butane, to be specified



## High-performance cutting paste **BDS 5500**



Optimally suitable for material types that are difficult to machine such as high-alloy steels, Hardox, stainless and heat-resistant steels. Suitable for use overhead and for work in constrained spaces.

## Cooling lubricant concentrate **BDS 6000**



For high demands based on synthetic raw materials.

- Miscible with water, biostable and mild smelling
- Improves the core drill service life
- Toxicologically harmless, water hazard class 1

## Spray cleanser **BDS 1000**



Optimal for repair and installation. The spray cleanser BDS 1000 cleans and degreases all metals. In contrast to conventional thinners, BDS 1000 evaporates without leaving any residues behind.

# Operating materials

High-performance, which can be applied effectively and eco-friendly.



## LUBRICANTS AND AUXILIARY MATERIAL

| ORD. NO. | NAME                                   | CONTENTS        |
|----------|----------------------------------------|-----------------|
| ZHB 001  | BDS 6000 Cooling lubricant concentrate | 1-litre can     |
| ZHS 005  | BDS 5000 Cutting oil                   | 5-litre can     |
| ZHS 006  | BDS 5000 Cutting oil                   | 1-litre can     |
| ZHS 400  | BDS 5200 Lubrication spray             | 1 x 400 ml can  |
| ZHS 406  | BDS 5200 Lubrication spray             | 6 x 400 ml can  |
| ZHS 412  | BDS 5200 Lubrication spray             | 12 x 400 ml can |
| ZHS 550  | BDS 5500 Cutting paste                 | 1000 g can      |
| ZSR 100  | BDS 1000 Spray cleanser                | 500 ml can      |

**Caution:** Do not use liquid lubricants when working overhead or on vertical surfaces. In such a case, oil might get into the motor causing short-circuit. Please, use BDS High-performance lubrication spray BDS 5200.



Step 1: Prior to drilling, spray the high-performance lubrication spray directly into the drill.



Step 2: During drilling, spray the high-performance lubrication spray onto the tip of the drill and into the borehole.